

## Minutes

March 11, 2023 meeting of CMMS was held jointly at the Christ and the Epiphany Church in East Haven and through online from 10 am - 12 pm. Nine members were present. Twenty members were in attendance. VP James McGuffick introduced new members and discussed the process for our inaugural interactive broadcast.



We now have members in Maine, North Carolina, Florida and Michigan. Bad weather is still lingering in Connecticut, so having the possibility to participate in our monthly meetings from home is a nice option. With this meeting we began the process of interactive 'broadcasting' to allow those who couldn't attend in person to still join in. Using Zoom, three cameras and a wireless clip-on microphone we were able to make this happen. Our first attempt was positive and proved the concept and utility. It also pointed out areas where we will need to improve such as using a better close-up camera.

## Officers

**President:** Fred Kerson  
**Vice-President:** Jame McGuffick  
**Treasurer:** James McGuffick  
**Secretary:** Mike Jantsch



**R**ob Szczepanski showed his 1/4" scale (1:48) *America* model in progress. Recently retired, Rob bought and started his Bluejacket model thirty years ago and then 'life' intervened to interrupt construction. While

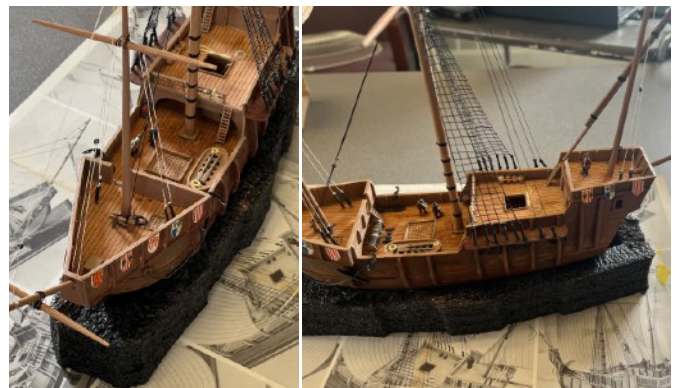
Bluejacket still sells this challenging model. It comes with detailed interior framing that adds complexity to fairing the hull but offers the opportunity for a reveal as Rob has done. Rob plans to leave his model unpainted but lacquered. Close inspection shows Rob's outstanding craftsmanship and joinery. His model of this famous American schooner racing yacht was built in 1851 in NY. The *America* sailed to England the same year, raced and beat the Royal Yacht Squadron in a race around the Isle of Wight and established the America's Cup. So far Rob's model is beautifully done - the photos don't do it justice!



**H**oward Williams brought in his model of the *Santa Maria*, Columbus' famous flag ship used in his voyage to the 'New World' in 1492. Howard carefully constructed his model using a Scientific Models Kit from the 1970's. The kit came with a solid hull and is 1:64 scale. Howard mounted it and added figures to give a sense of scale. The model showcases Howard's flair for presentation that give his models life and engages the



viewer. It must have been quite a voyage to cross the Atlantic in the original and largest of Columbus' three ship fleet. Originally named *La Gallega* Columbus renamed it *Santa María de la Inmaculada Concepción*. She was a medium-sized nau (or ship) often referred to as a carrack of about 60' length and 100 tons.

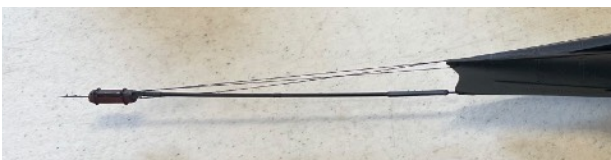




**R**ick Abramson presented his 1/35 scale model of the *H. L. Hunley* (aka *CSS H. L. Hunley*) a submarine used during the Civil War to sink the *USS Housatonic*, part of the Union blockade off the coast of South Carolina, in February 1864. The *Hunley* was propelled by a hand cranked propeller shaft and was about 40' long and almost 4' wide. Following its one successful attack, the boat began to dive and never resurfaced killing all 8 crew members. Rick used a Mikro Mir kit (Russian) that he carefully constructed using his considerable modeling skills. He noted that attaching the 3 propeller blades was particularly difficult since there were no locating pins on the prop shaft. Instead he had to line them up by eye! He also used a piece of paper to build the prop guard brackets. Rigging the torpedo seen at the end of the bow tackle must have been a challenge as well!



The *Hunley* was recovered in 2000 and is kept in a tank of sea water. It can be view in a museum (the Warren Lasch Conservation Center) located in North Charleston. There is a replica of the *Hunley* that you can go into if you're not claustrophobic! The major contribution of the *Hunley* is that it demonstrated that submarine warfare was possible and effective.



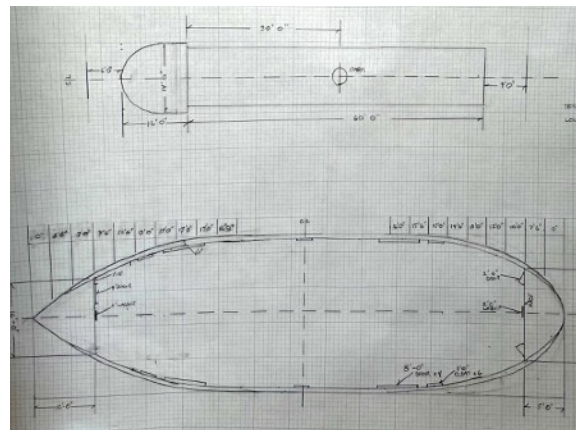
**J**ohn Elwood brought in his scratch built HO scale model of the *Sabino* a wooden steamboat built in 1908 in Maine. John was able to spend time on the restored *Sabino* located and operated at Mystic Seaport Museum. From photos he took and measurements he made, John was able to build this beautiful, spectacular and accurate model of the *Sabino*. He used many different materials from paper to styrene to construct this ship. Originally the *Sabino* carried



passengers and cargo in the Portland, Maine area and sported a two-cylinder Paine compound steam engine installed in 1908, that's still working today!



**E**ric Hirsh showed three, simultaneously built, models of *Pennsylvania Railroad covered steam lighters* scratch built at HO scale. The construction took about a month and a half according to Eric. He then sells his great looking models. Eric draws his own construction plans by hand using old photographs to make measurements. The hulls are solid and he hand-paints his models using brushes and acrylic paint - two coats.



He purchases his fittings from Seaport Model Works, a company that specializes in HO scale nautical models and shoreline model buildings for HO scale railroad layouts.

It was interesting to learn that major railroad companies also owned fleets of ships that served to help move cargo and RR engines/ cars. These three models were part of Penn RR's fleet of lighters and were named the *Terre Haute*, the *Louisville*, and the *Indianapolis*. For more pictures, checkout our website <https://ctshipmodels.org/index.html> where Eric has posted these three models posing side-by-side.





**E**d Petrucci brought in his scratch built model of the *Cabot*, a Continental Navy brig with 14, 6-pounder guns. She was 74' in length (189 tons). Ed's model is 1/8" scale and yet another example of his extraordinary skill and artistry. In addition to his model Ed gave a demonstration of how to make various fittings such as eye bolts, dead eyes, and blocks. Something that Ed makes look easy, but isn't!



Clearly, Ed's experience as a master carver is evident in the amazing fittings he makes by hand.

**D**ave Dinan also gave a demo, his was on how to solder small fittings - let's call it 'micro' soldering. Dave's naval models are constructed in very small scales and often require soldering very thin copper wire for rigging, antennas, etc. Dave is a master at this and his demo was a great opportunity to learn the intricacies of this technique at a very small scale. Dave emphasized the importance of cleaning the parts, using good paste flux and tiny 'slivers' of flattened solder, pounded flat on an anvil. Dave also noted how important it is to keep in mind that molten solder will



always flow towards the heat source, so make sure that fact is considered when choosing where to place the heated soldering iron tip.

## Reminders

# 40th Annual Northeast Joint Clubs Ship Model Conference and Show

**Saturday, April 29th, 2023**

Port 'N' Starboard Convention Center  
Ocean Beach Park, New London, CT

Model Setup 8:30 am - General Admission 9:00 am

\$50 before April 29, \$55 at door.

Please note that if you've already paid \$40 before March 15, the NY Shipcraft Guild later corrected the fee to \$45. The additional \$5 should be paid at the conference - **DO NOT** send them a check.



**CMMS Meeting**  
**April 15**  
**Christ and the Epiphany Church**  
**East Haven**  
**10 am - 12 pm**