

Connecticut Marine Model Society



THE BINNACLE



APRIL 13, 2024

RICK ABRAMSON EDITOR

MINUTES

'Captain' James McGuffick called the meeting to order at 1000 with 18 members in attendance and 2 via Zoom: Sally Nye and Paul Goldberg. James gave the current treasurers report. To date, 96 attendees have signed up for the April 27 conference in New London. Olha Batchvarova, who has been our "resident photographer" at past conferences will be present this year again. Many thanks to James for "signing her up." With the OK from James, I will be putting together an extra Binnacle to cover the conference. Various books have been graciously donated to CMMS for the conference as either give-aways or raffle prizes. The raffle tickets will be sold at the various entrances. The white tickets at \$1.00 each, color tickets at \$5.00 each, 5 tickets for \$20.00. Many display models will also be "docking" at The Port and Starboard, and there are total of 4 workshops scheduled for 30 minutes each. James has contacted various other ship societies about putting on workshops and/or attending. These include Philadelphia, NY, NJ and MA. Announcements concerning this event have been placed in Model Ship Works and The New London Day. Dave Varholy took the time to distribute conference flyers in the New London area. . .thank you Dave!!

Examples of various plaque styles and size options were shown and discussed. It was unanimously decided on the walnut, 8"X10"landscape format plaque. This year for the Peoples Choice Awards there will be three categories: Sail, Power, and Other with only one award in each category. There will also only be one award given for the Modelers' Choice Award. There is no decision yet as to whether or not there will be a Roberts Award. James then passed around a sample for a certificate for junior modelers.

It was also noted that CMMS has an anniversary to celebrate. . .founded (and not foundered) 60 years ago!

Dave Dinan advised that 10 Club shirts are still available.

Meeting was adjourned at 1145.

Respectfully Submitted,
Rick Abramson, Secretary

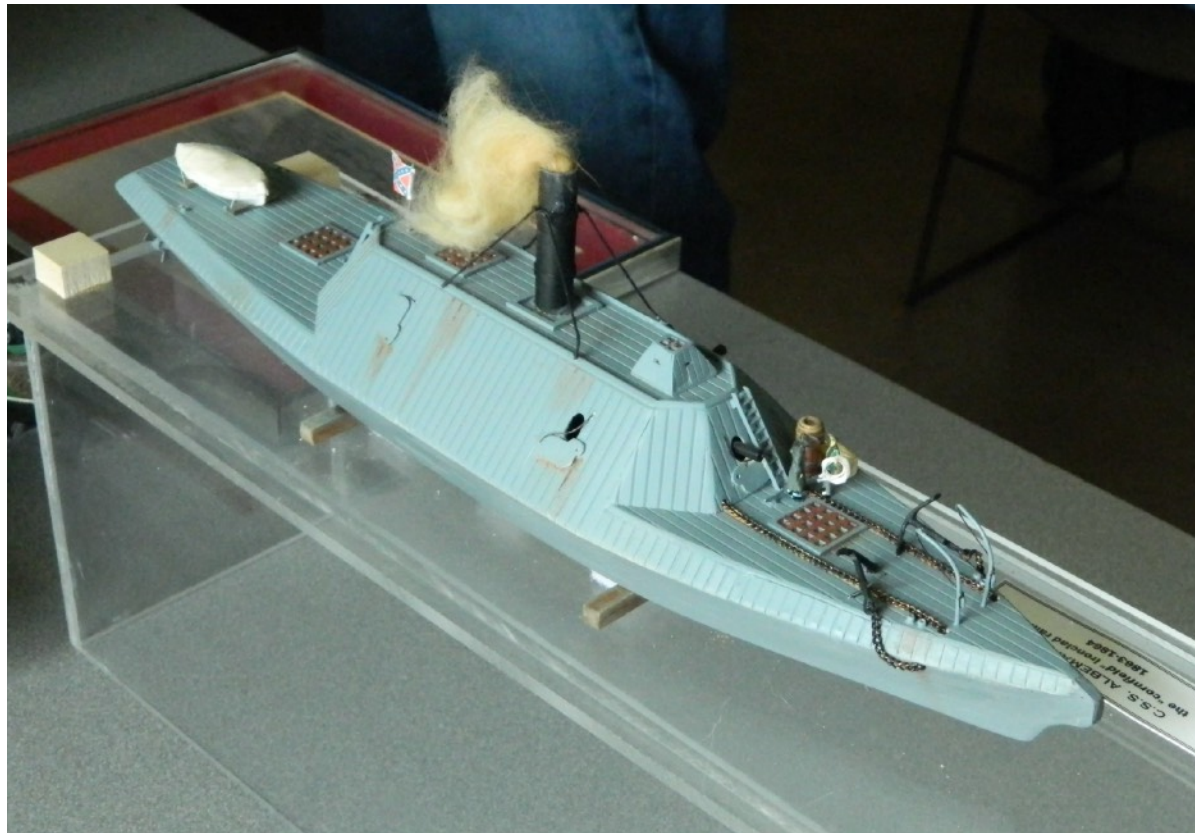
Officers

President/Treas.: James McGuffick

Vice-President: Tom Szabo

Secretary: Rick Abramson

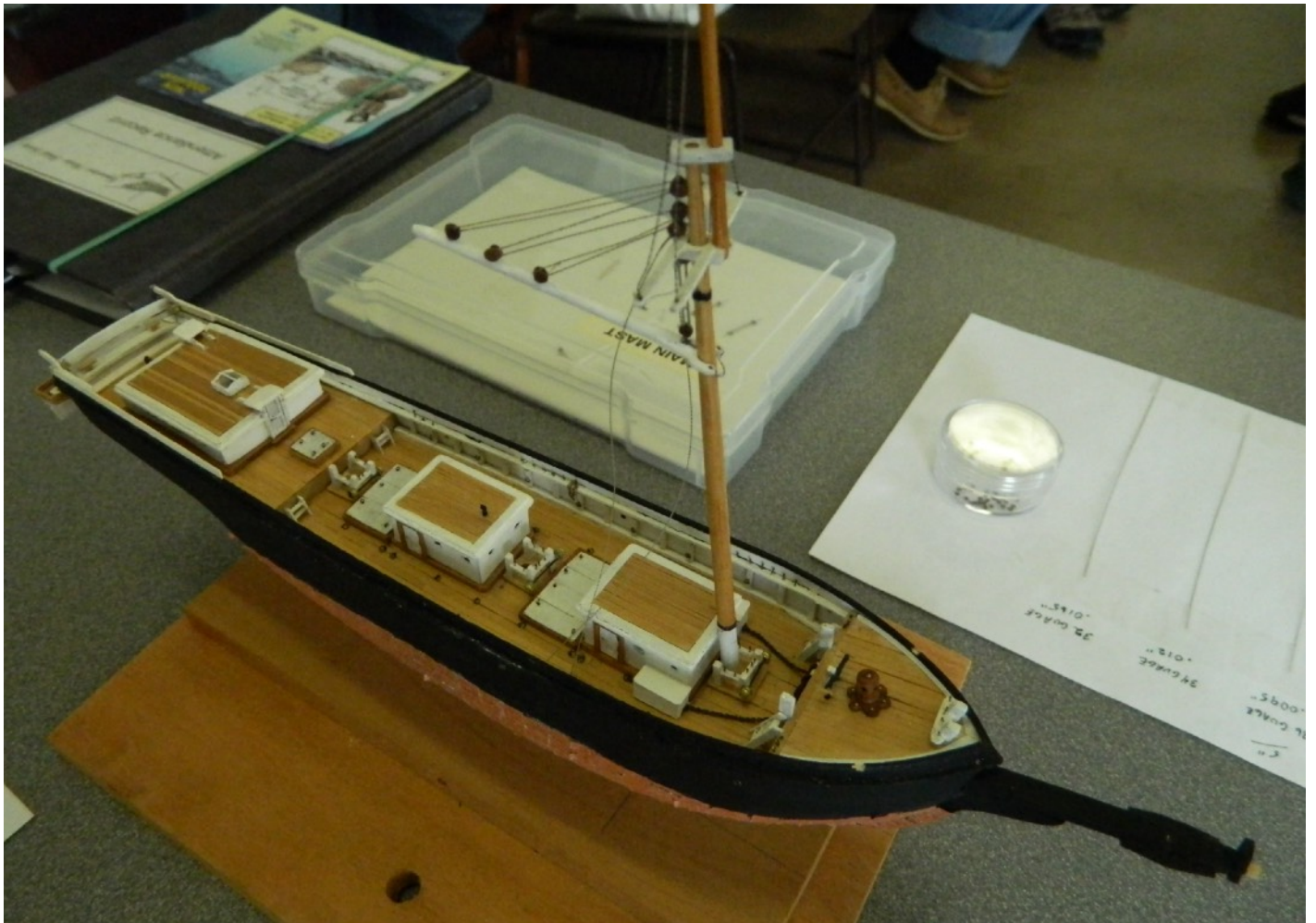
<https://ctshipmodels.org/index.html>



Howard Williams: Ironclad *CSS Albemarle* in 1/87th scale. Howards model is made from wood and styrene. The *Albemarle* was rammed and sunk by the *USS Sassacus* on May 5, 1864. She was later raised and eventually scrapped. Smoke billowing out of the stack is made from cat hair.



Tom Szabo: Scratch built *Charles W. Morgan* in 1/96th scale. Tom began construction in 2019. The Morgan was built in 1841 and sailed until 1900! Sails were made from Silkspan and properly weathered and detailed. It is a plank on bulkhead construction with 15 bulkheads. It also has all individual copper plating. Now we need Tom to build the Pequod complete with a "great white whale!!"



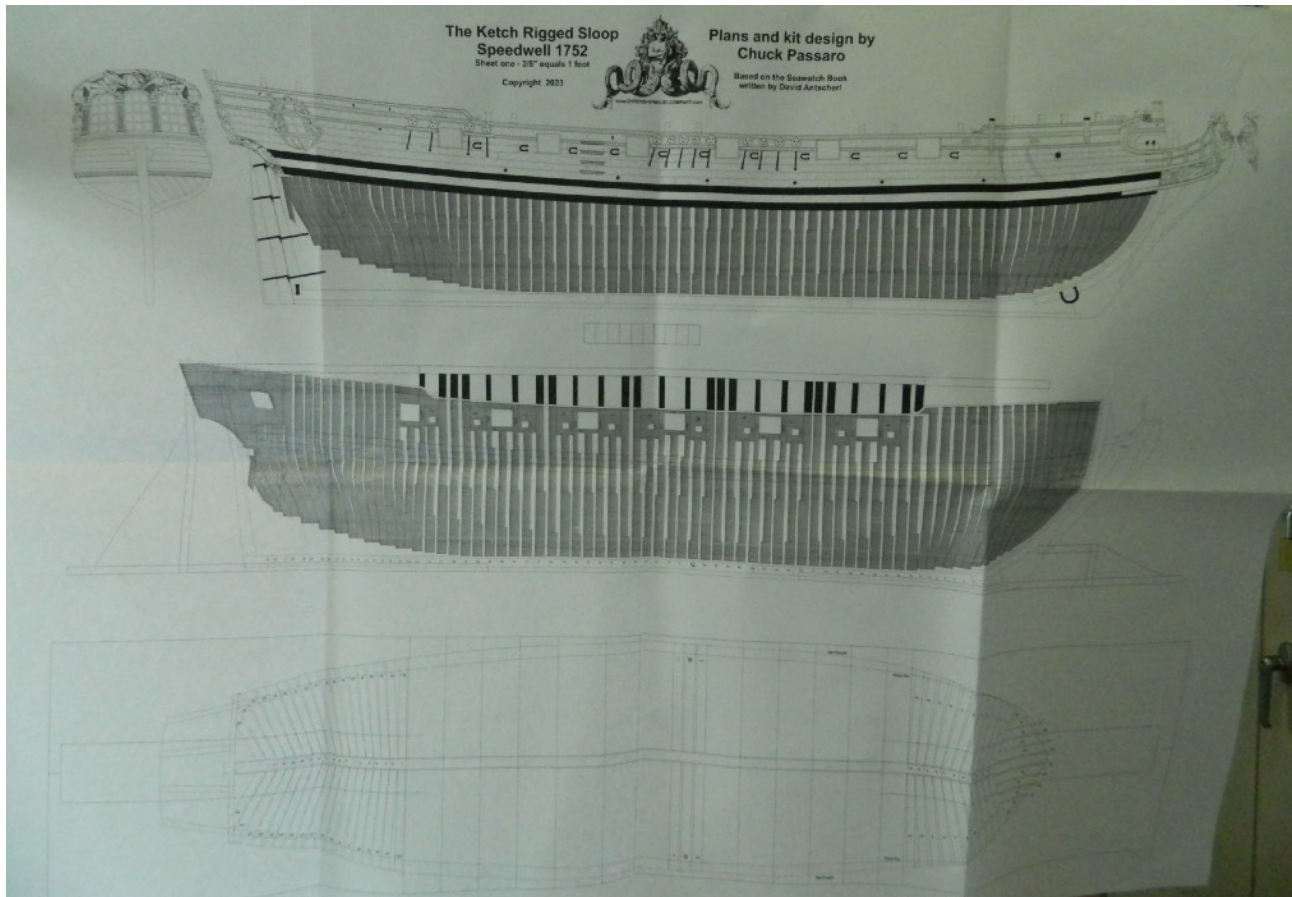
A I Saubermann: This scratch built model of the three masted schooner *James Miller* (1/192 scale) is currently under construction. She was constructed in 1854 on the Connecticut River and was in service for 50-60 years! Plans for the ship were derived from only a written description! The copper plating are all individual pieces. The rigging is made from twisted copper wire that is then painted to make 'lines' as small as 0.006" in diameter.



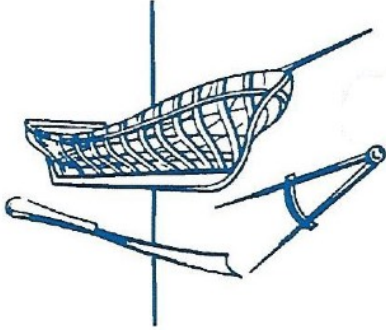
Rick Abramson: The Revell *S.S. Argentina* in 1/400th scale. The kit produced by Revell in 1959 sold for \$1.98! The *Argentina* and her sister ship *S.S. Brasil* were built by Ingalls Shipbuilding in Mississippi. They were the last ocean liners built in the US.



Rick Abramson: Revell's Model tugboat, scale unknown, was introduced in 1959 and sold for a \$1.25! The prototype for the model was the tug *Long Beach* operated by the Wilmington Towing Company in California. Rick painted the model in a scheme used by the Red Star Towing Co. from a photo that he took shown above.



Rick Bell: Showed Chuck Passaro's beautifully designed model kit of the ketch rigged, 1752 sloop *Speedwell* in 3/8th inch scale. This model is made from Alaskan Yellow Cedar, using plank on frame construction. Rick has just received the model and plans to start her construction soon. Shown above are a sample of the plans.



**Connecticut Marine Model Society presents
The 41st Annual Northeast Joint Clubs'**

SHIP MODEL CONFERENCE AND SHOW

SATURDAY, APRIL 27, 2024

9:00 AM - 3:00 PM

(Model Setup 8:15 AM)

**Port 'N Starboard Convention Center,
Ocean Beach Park,
98 Neptune Ave.
New London, CT**

860-447-3031

Directions at: <http://ocean-beach-park.com/contact/>

NEXT CMMS MEETING

May 11, 2024

AT

CHRIST AND THE EPIPHANY CHURCH

EAST HAVEN

FROM

10 AM TO 12 PM

Please Try to Attend